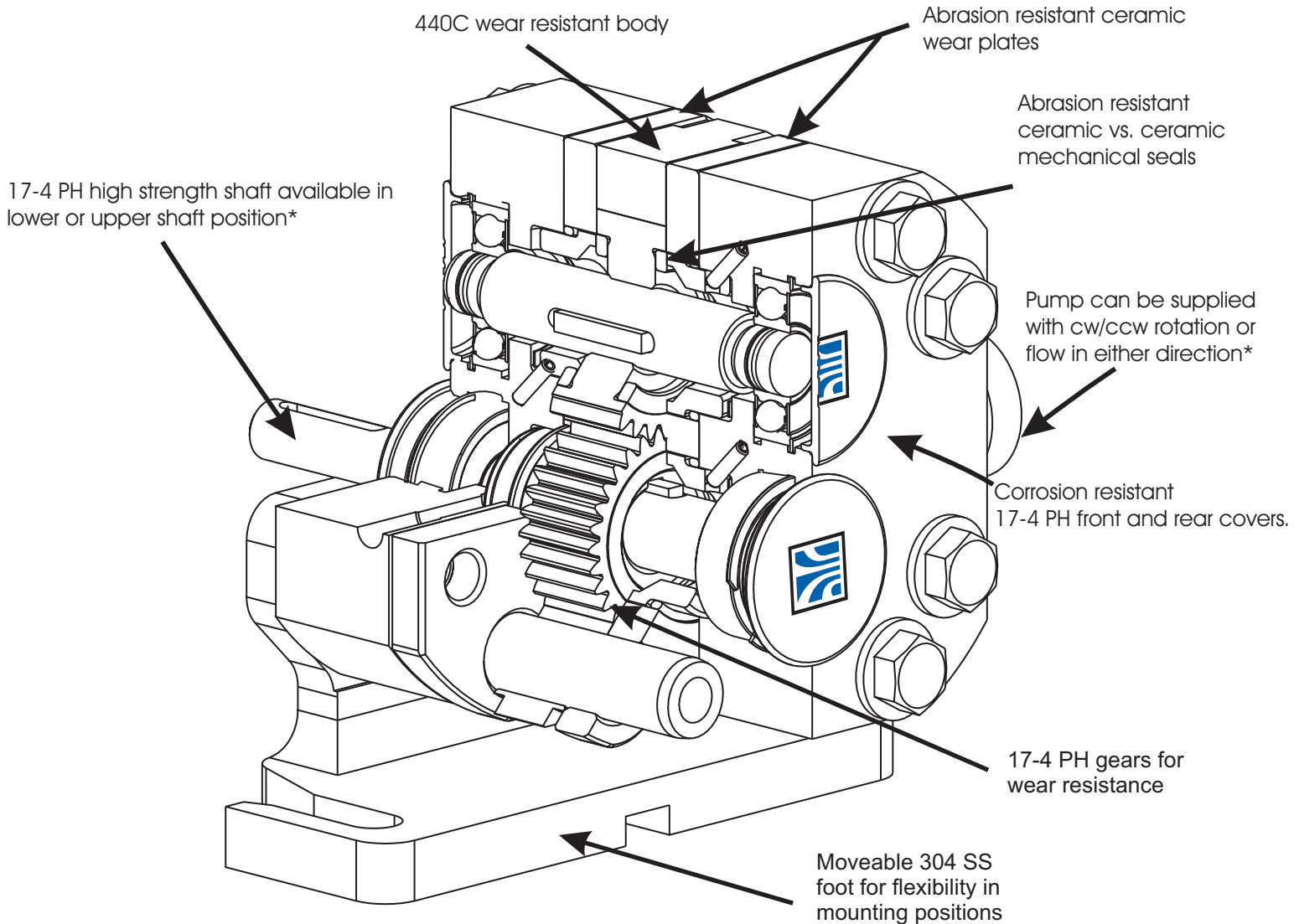


Universal Gear *Metering Pump*



*Shaft position, rotation, and flow direction can be changed in field.

Features

- Cleans fast - up to 600 RPM - for quick product changes.
- Pump flushes quickly with minimal product loss; mechanical seals incorporated into the gear faces reduce total product volume in the pump.
- Standard and hot clearance rotors available.
- Ceramic seals and Kalrez O-rings stand up to tough solvents and other harsh chemical applications. EPDM or Viton O-rings optional.
- Ceramic wear plates - eliminate cover wear and extend gear life.
- Pressure capability - up to 200 psi/13.8 bar.

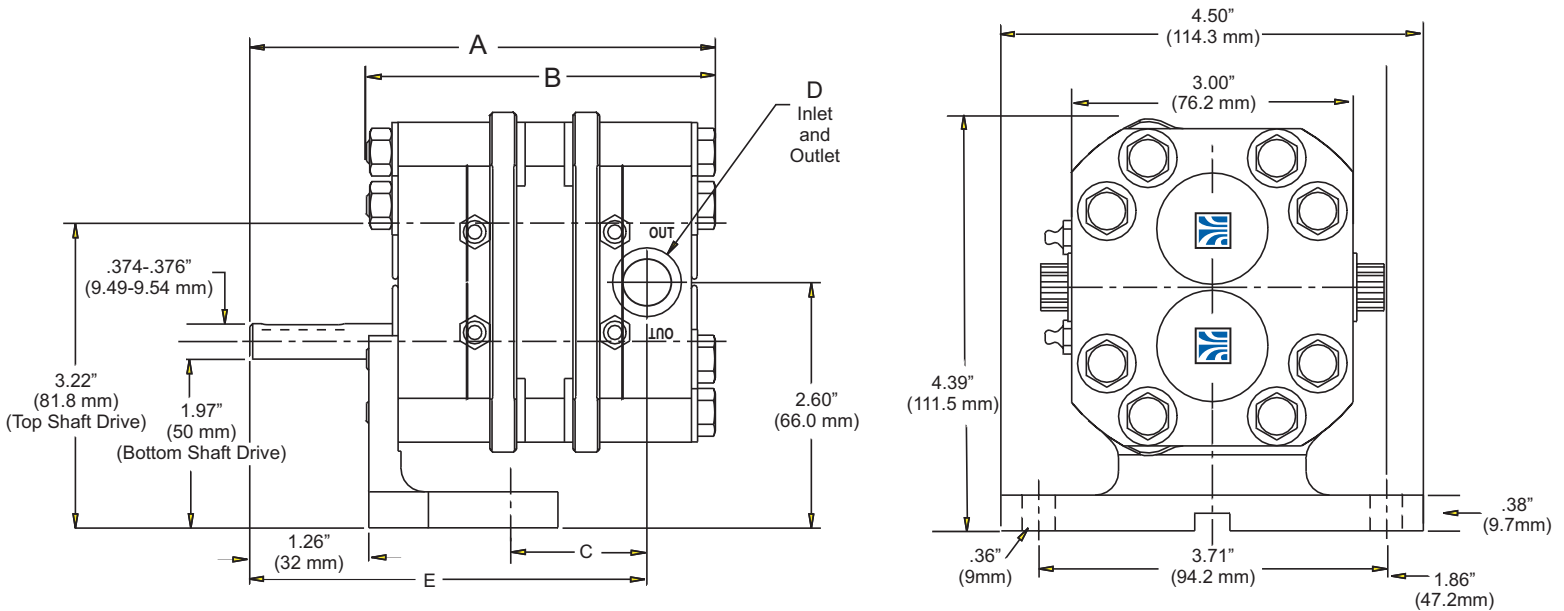
**ISO 9001
CERTIFIED**

Patent Pending



**Waukesha
Cherry-Burrell**

DIMENSIONS



Model	A		B		C		D J1453 SAE UN THREAD	E		F KEYWAY	
	IN	MM	IN	MM	IN	MM		IN	MM	IN	MM
3UG	4.9	125	3.7	94	1.44	36.6	11/16-16	4.2	106.7	1/8 X 7/8	3.18 X 22.2

Model	Displacement Per Revolution	Nominal Capacity To	Inlet / Outlet J1453 SAE	Optional 316SS Inlet / Outlet S - Line Port	Pressure Range	Maximum RPM	Temp Range
3UG	3.15 cc	1800 cc / min	11/16 -16	1/2"	200 PSI (13.8 bar)	600	to 180 F (82 C)



**Waukesha
Cherry-Burrell**

®

**ISO 9001
CERTIFIED**

Waukesha Cherry-Burrell
611 Sugar Creek Road
Delavan, WI 53115 USA
Tel: 1.800.252.5200 or 262.728.1900
Fax: 1.800.252.5012 or 262.728.4904
E-mail: custserv@gowcb.com
Web site: <http://www.gowcb.com>

*For additional information please contact your
local Waukesha Cherry-Burrell distributor.*

FF-1102
WCB-FAX-11/00
Printed in U.S.A.
Effective 11/00